

Z:\2018\U-5510\Traffic\Signing\CADD\Signing Layout Plans\U-5510_Sgn_SGN_1.dgn
7/3/2018 10:35:51 AM PDT
User: jmelvin


T.I.P.: U-5510

CONTRACT: DL00185

STATE OF NORTH CAROLINA
DEPARTMENT OF TRANSPORTATION

SIGNING PLAN
CATAWBA COUNTY

LOCATION: SR 1468 (SWEETWATER RD) EXTENSION FROM
US 70 TO SR 1005 (STARTOWN RD)

PROJECT REFERENCE NO.	SHEET NO.
U-5510	SIGN-1
APPROVED: _____	
DATE: _____	
SEAL	
	
7/3/2018 10:35:51 AM PDT	
DOCUMENT NOT CONSIDERED FINAL UNLESS ALL SIGNATURES COMPLETED	

ROADWAY STANDARD DRAWING

THE FOLLOWING ROADWAY STANDARDS AS APPEAR IN "ROADWAY STANDARD DRAWINGS" -
PROJECT SERVICES UNIT - N.C. DEPARTMENT OF TRANSPORTATION - RALEIGH, N.C.,
DATED JANUARY 2012 ARE APPLICABLE TO THIS PROJECT AND BY REFERENCE HEREBY ARE
CONSIDERED A PART OF THESE PLANS:

STD. NO.	TITLE
904.10	ORIENTATION OF GROUND MOUNTED SIGNS
904.50	MOUNTING OF TYPE 'D', 'E' AND 'F' SIGNS ON 'U' CHANNEL POSTS

GENERAL NOTES

- . SIGNS FURNISHED BY CONTRACTOR
- . IF REMOVAL OR RELOCATION OF SIGNS ON PRIVATE STREET (NON-STATE MAINTAINED) IS REQUIRED DUE TO CONSTRUCTION, THE CONTRACTOR SHALL INFORM THE ENGINEER. THE WORK WILL BE COMPLETED BY OTHERS.
- . WHEN NOT STATIONED OR DIMENSIONED ON PLANS, ALL 'E' AND 'F' SIGNS SHALL BE FIELD LOCATED BY THE ENGINEER
- . ALL EXISTING SIGNS ON "U" CHANNEL POST WITHIN THE PROJECT LIMITS SHALL BE REMOVED AND DISPOSED OF UNLESS OTHERWISE NOTED ON PLANS.
- . WHEN EXISTING SIGNS ARE REMOVED AND INSTALLED ON NEW SUPPORTS, THE RE-ERECTION SHALL IMMEDIATELY FOLLOW THE REMOVAL.
- . THE BACKGROUND FOR TYPE E & F SIGNS SHALL BE TYPE C REFLECTIVE SHEETING.

SUMMARY OF QUANTITIES

ITEM NO.		ITEM DESCRIPTION	QUANTITY	UNIT
DESC. NO.	SECT. NO.			
4025000000	901	CONTRACTOR FURNISHED, TYPE E SIGN	145	S.F.
4072000000	903	SUPPORTS, 3 LB STEEL U-CHANNEL	320	L.F.
4102000000	904	SIGN ERECTION, TYPE E	20	EA.
4116100000	904	SIGN ERECTION, RELOCATE SIGN TYPE E (GROUND MOUNTED)	3	EA.
4155000000	907	DISPOSAL OF SIGN SYSTEM, U-CHANNEL	6	EA.
4192000000	907	DISPOSAL OF SUPPORT, U-CHANNEL	3	EA.
4237000000	907	STOCKPILE SIGN, D, E OR F	5	EA.

INDEX

SHEET NO.	DESCRIPTION
SIGN-1	TITLE SHEET
SIGN-2	TYPE E SIGNS
SIGN-3 AND 4	SIGNING PLAN SHEETS

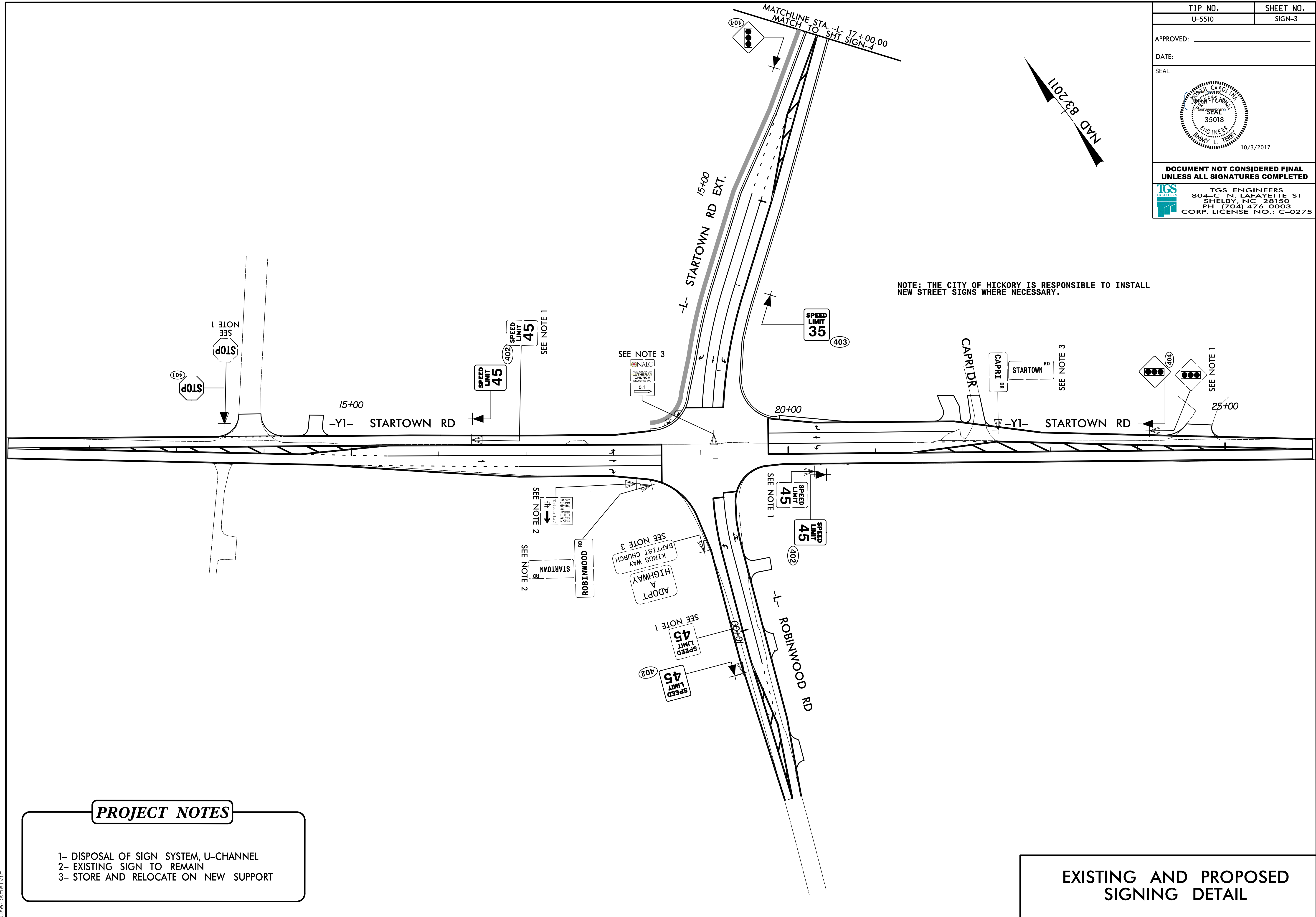
PLAN PREPARED BY: TGS ENGINEERS

JIMMY L. TERRY, PE	PROJECT ENGINEER
SANDRA G. MELVIN	DESIGN TECHNICIAN

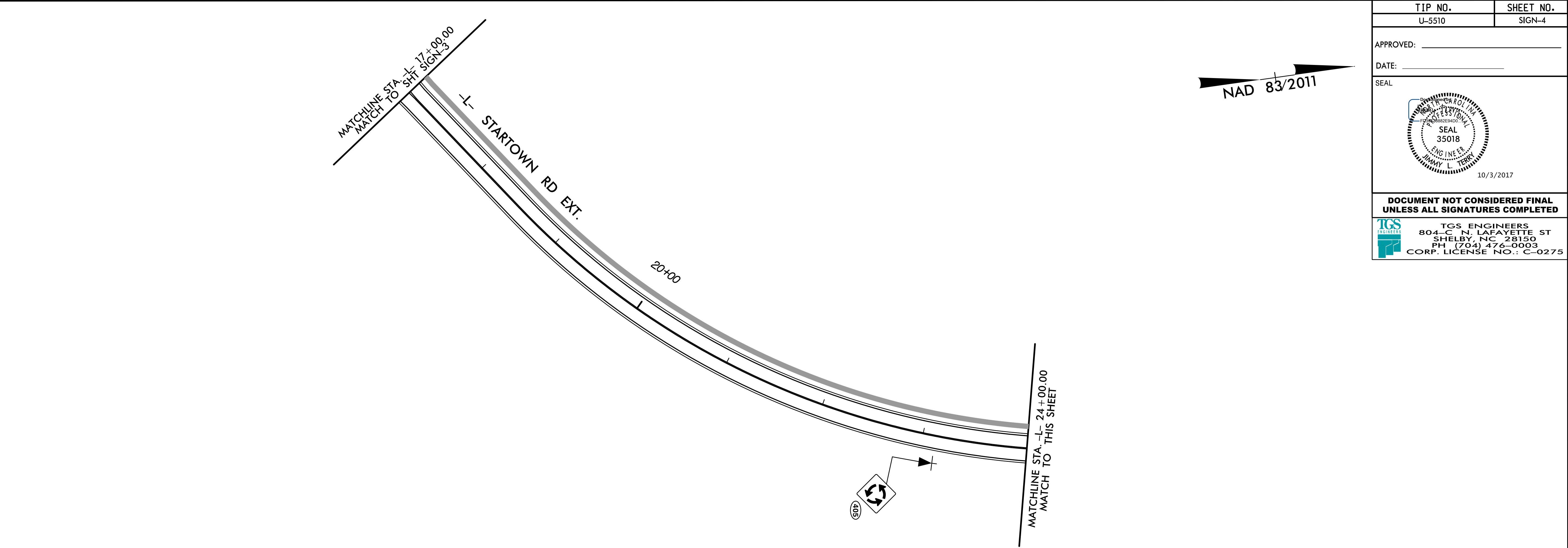


TGS ENGINEERS
804-C N. LAFAYETTE ST
SHELBY, NC 28150
PH (704) 476-0003
CORP. LICENSE NO.: C-0275

TYPE "E" SIGNS



I:\2017\10\2\2017\U-5510\Traffic\Signing\CADD\Signing Layout Plans\U-5510_Sgn_SGN_4.dgn
User:smelvin



TIP NO. U-5510	SHEET NO. SGN-4
APPROVED: _____	
DATE: _____	
SEAL 10/3/2017	
DOCUMENT NOT CONSIDERED FINAL UNLESS ALL SIGNATURES COMPLETED	
 TGS ENGINEERS 804-C N. LAFAYETTE ST SHELBY, NC 28150 PH: (704) 476-0003 CORP. LICENSE NO.: C-0275	

